

# WINDSOR HOUSE

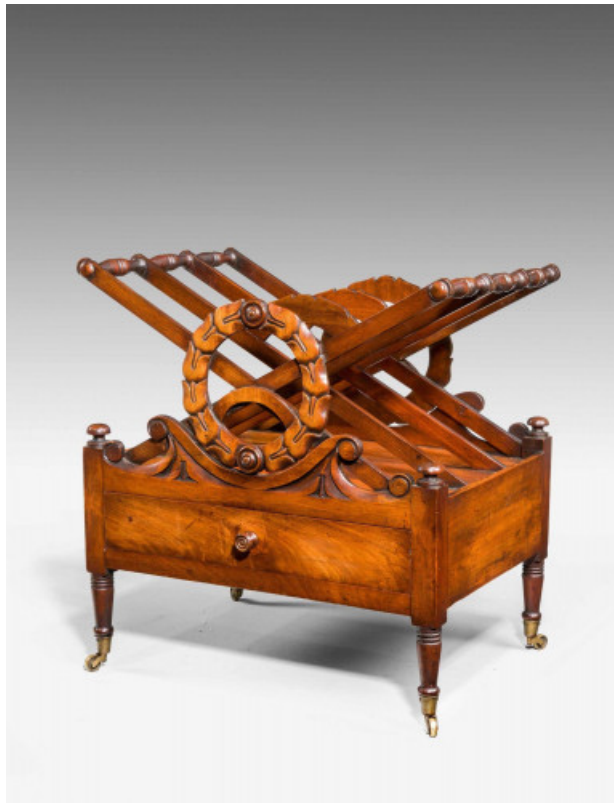
## A N T I Q U E S

### Regency Period Mahogany Canterbury

REF: 4219

Height: 48.26 cm (19") Width: 48.26 cm (19") Depth: 35.56 cm (14")

£3,450 **SALE £2,410**



A well figured Regency period mahogany Canterbury, after a design by J.C.Loudon, the centre carved with tulips in the form of a wreath, single drawer and standing on finely turned supports. John Claudius Loudon's mammoth Encyclopaedia of Cottage, Farm and Villa Architecture and Furniture, first issued in 1833 and reprinted until 1867, did more to popularize and codify the range of styles available to late Georgian cabinetmakers and architects than any other publication. The present Canterbury derives from his elegant 1833 Grecian design, reproduced in E. Joy, Dictionary of British 19th Century Furniture Design, London, 1977, p.422. A closely related rosewood lyre-end Canterbury, sold Christie's London, 28 June 1973, is illustrated in G. Beard and J. Goodison, English Furniture 1500-1840, London, 1987, p.277, fig. 6.

Shipping P.O.A. Subject to quotation and will be charged separately.  
Please contact us for more details. If purchasing online, the shipping price will be shown as zero here but you will be liable for all shipping costs.

Windsor House Antiques

Barnwell Manor, Barnwell, Near Oundle, Peterborough, Northants, PE8 5PJ

sales@windsorhouseantiques.co.uk +44 (0) 1832 274 595 www.windsorhouseantiques.co.uk